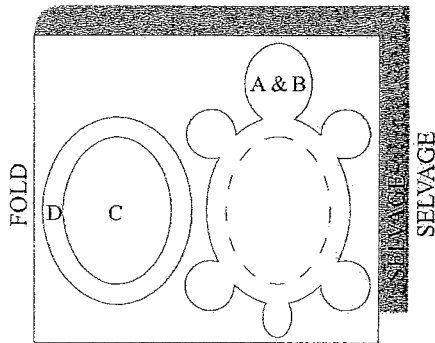
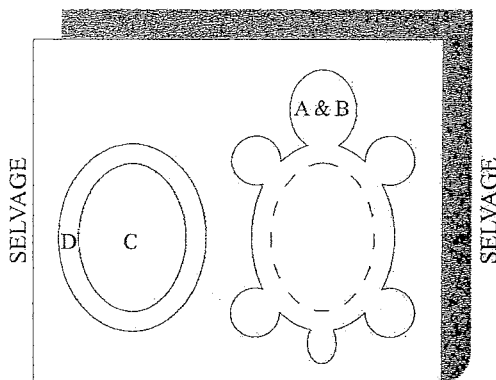


TURTLE PILLOW INSTRUCTIONS

60" Fabric, Use 3/4 Yds.

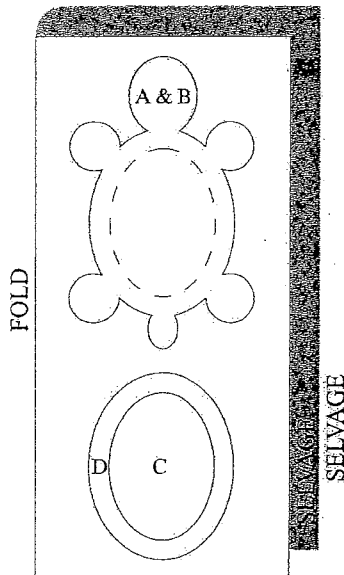


36" Fabric, Use 1-2/3 Yds.



FOLD

45" Fabric, Use 1-1/3 Yds.



Fabric Required: Use soft, colorful fabric like that used for quilts. See diagrams at left for widths and amounts.

1. Cutting Instructions

- Cut 2 main bodies creating pieces "A" and "B". Cut the center out of "B".
- Cut 2 ovals creating "D" pieces. Cut the center out of both "D" pieces. Use one of the small ovals for piece "C".

2. Mark dots on "B", "C" and "D".

3. With right sides together, matching dots, sew the "D" pieces together on outer edge with a 1/4 inch seam. Turn, press and top stitch a 1/4 inch from the seam just sewn.

4. Lay the completed piece "D" over the front of piece "B", matching the dots. Sew the three edges together around the oval opening with a basting stitch. This creates a unified piece, which is easier to work with in the next step.

5. Lay piece "C" face down inside the unified "B/D" piece, which is also lying face down. **Pull up the oval edges to match the front sides of the material, matching the dots. Pin.** Ease fabric in by pulling and gathering the basting stitch. Sew a 1/4 inch seam.

6. Sew and insert eyes as you wish.

Options:

- Use plastic eyes with push on washers on the inside.
- Use buttons for eyes.

For the above options put an extra circle of material or felt on the inside of the turtle for extra support.

- Use applique eyes.

7. Now you have a completed top for the turtle, which can be seamed onto the underside of the turtle, piece "A", using a 1/4 inch seam allowance. Leave an opening on one side for turning and later stuffing.

8. Turn right side out and top stitch each foot in two places, starting at the edge and stitching toward the center to form the toes.

The original turtle pattern was graciously donated by:
Val Herford, Home Economics Teacher
Mesa Intermediate, Palmdale, CA

This revised turtle pattern for Delta Zeta was written by:
Alice Kallus, DZ Mom, Hallettsville, TX (lcback@cvtv.net)

Please leave all pillows **UNSTUFFED** as there is very limited storage space. Mail all finished turtle pillows to "The Painted Turtle".

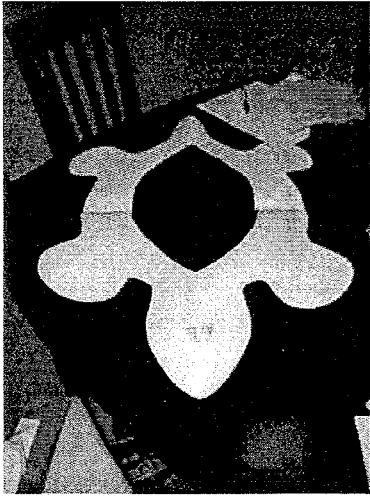
PO Box 455
Lake Hughes, CA 93532

OR

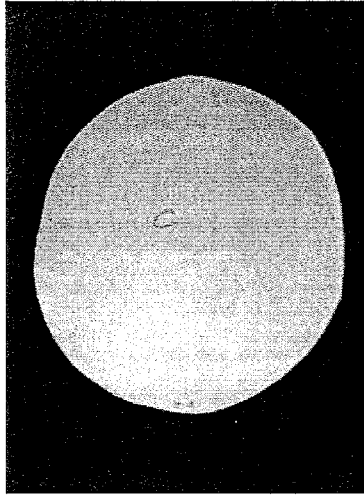
1300 4th Street, Ste 300
Santa Monica, CA 90401



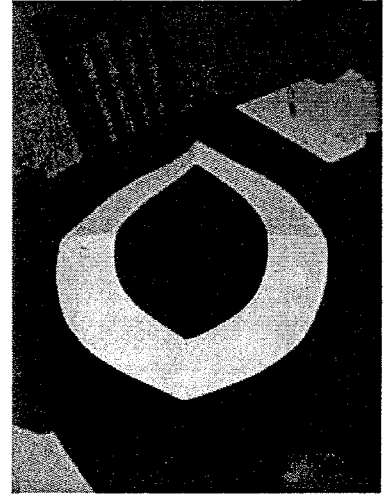
PATTERN PIECES



Piece A/B

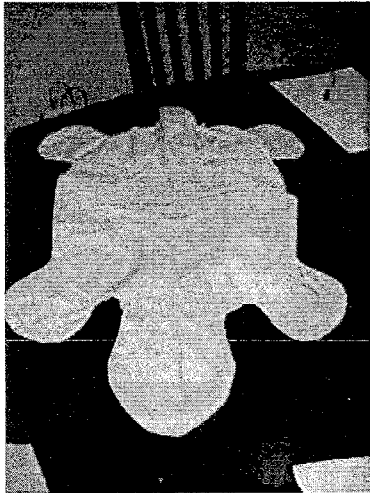


Piece C

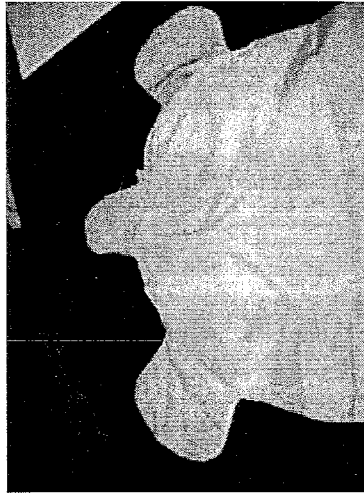


Piece D

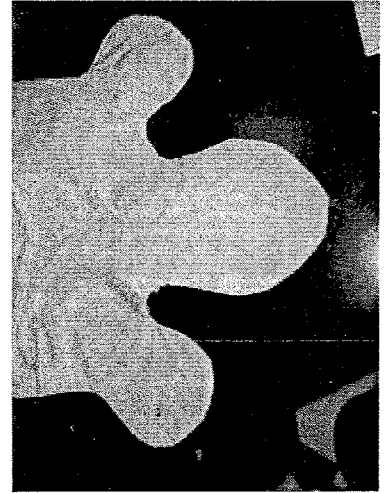
COMPLETED TURTLE



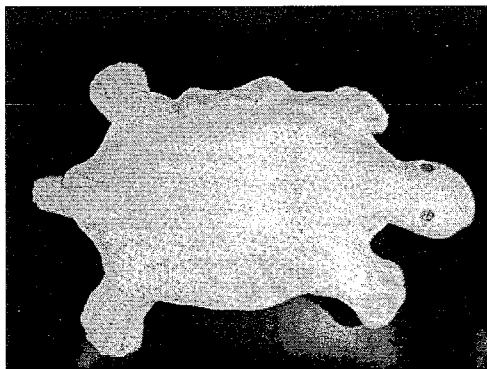
Underside - Piece A



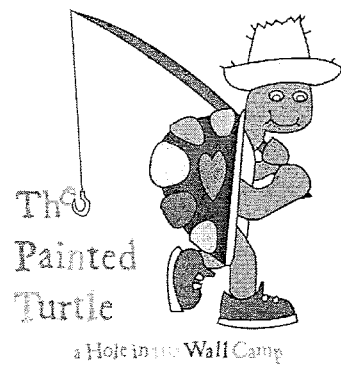
Underside - Rear Portion



Underside - Front Portion



Completed Pillow



REMINDER: Please leave all pillows UNSTUFFED as there is very limited storage space.