

# Comfort Cap

by Husqvarna Viking

## Fabric selection

Select soft, natural fabrics such as cotton or lightweight cotton knit. Keep in mind the sensitivity of the recipients' scalps when making your fabric selections. The inside lining of the hat should always be made from a soft, knit fabric. For the outside of the hat consider cottons, denim, fleece, fun prints, solids, etc.

## Materials

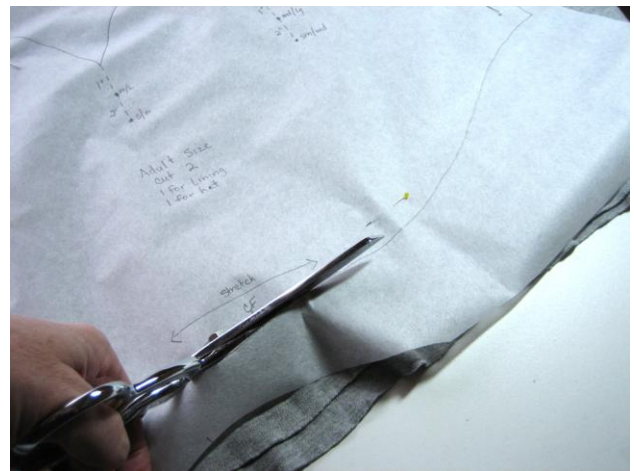
½ yard of 60 inch wide knit fabric **OR**

¾ yard of 45 inch wide woven fabric

Optional: You may make the outer fabric woven and the lining in knit.

## Layout

Place the pattern on your fabric with the grainline arrow across the width of the knit fabric where there is typically the most stretch. If you are using a woven fabric, place the grainline arrow on the bias.



## Cutting

Cut out 2 caps and transfer all markings to the fabric.

## Sewing

Use a sewing machine rather than a serger as a sewing machine will afford softer seams. Set your machine on a long, narrow zig zag stitch. This will allow for some stretch.

Start with the outside darts. Sew with your seam allowance according to the size you are making. With right sides together start sewing from the top of the dart to the mark on the fabric.



Sew up the center back seam and down into the center dart.



Repeat above steps for the hat lining.

Place the lining inside the hat **RIGHT SIDES TOUCHING**, matching the center back seam and center front mark.

Stitch all the way around the lower edge leaving an opening where marked. Tip: When sewing a knit to a woven, place the knit side down against the sewing machine feed dogs with the woven fabric facing up. Reduce the foot pressure and slightly stretch the woven fabric as you sew.

Turn. Press.



Top stitch around the lower edge. This will close the opening where you turned the hat.

Tip: Stitch clear elastic into the brim seam line to eliminate gaping in the back of the hat. **Do not sew elastic directly onto the lining.** It must be placed between the lining and the hat. Place the two hats inside each other as in the instructions above. Lay a piece of clear elastic – one to one – along the brim seam line around the cap. Pin in place without stretching the elastic. Proceed by stitching around the brim of the hat, catching the elastic in the seam without stretching it. Leave an opening for turning as described above.



*You're all done!*